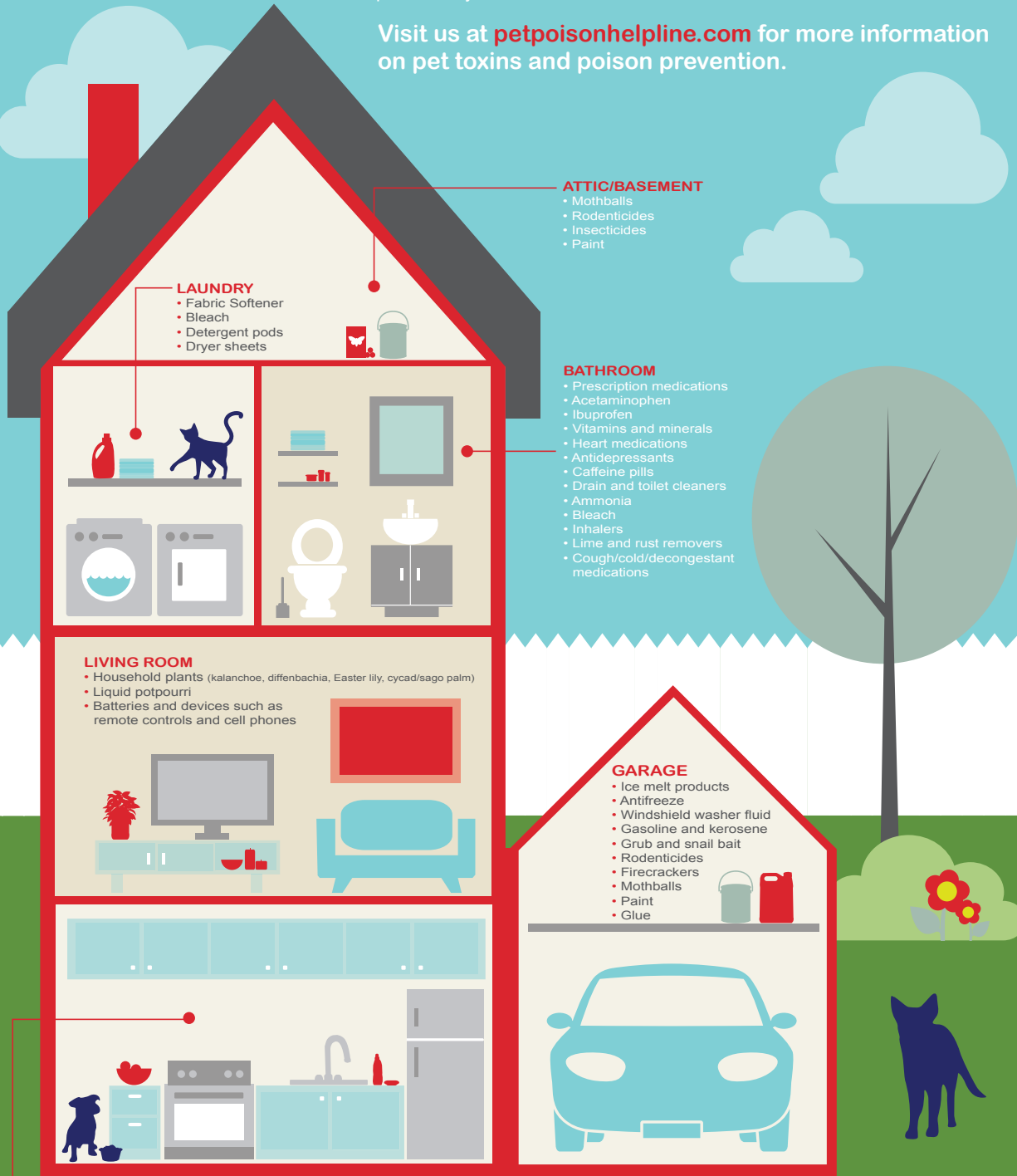


SPOT THE PET POISONS IN YOUR HOME

Pet-proofing your home is one of the first steps in keeping your pets happy and healthy. There are common household and yard items that can harm your pet if swallowed and each year, many dogs and cats suffer from accidental ingestion of these substances. Follow this guide to spot the pet poisons in your home.

Visit us at petpoisonhelpline.com for more information on pet toxins and poison prevention.



ATTIC/BASEMENT

- Mothballs
- Rodenticides
- Insecticides
- Paint

LAUNDRY

- Fabric Softener
- Bleach
- Detergent pods
- Dryer sheets

BATHROOM

- Prescription medications
- Acetaminophen
- Ibuprofen
- Vitamins and minerals
- Heart medications
- Antidepressants
- Caffeine pills
- Drain and toilet cleaners
- Ammonia
- Bleach
- Inhalers
- Lime and rust removers
- Cough/cold/decongestant medications

LIVING ROOM

- Household plants (kalanchoe, diffenbachia, Easter lily, cycad/sago palm)
- Liquid potpourri
- Batteries and devices such as remote controls and cell phones

GARAGE

- Ice melt products
- Antifreeze
- Windshield washer fluid
- Gasoline and kerosene
- Grub and snail bait
- Rodenticides
- Firecrackers
- Mothballs
- Paint
- Glue

KITCHEN

- Chocolate
- Macadamia nuts
- Grapes/raisins/currants
- Onion/garlic/chives
- Xylitol (sugar free gum or candy)
- Caffeine (coffee, tea)
- Chicken bones
- Fatty scraps
- Unbaked yeast bread dough
- Alcohol
- Table salt
- Household cleaners and solvents
- Moldy foods
- Medications
- Oven cleaners

YARD & GARDEN

- Plants: autumn crocus; azalea; cycad/sago palms; foxglove; lily of the valley; oleander; rhododendron; spring bulbs (tulips, daffodils, hyacinth, etc.); true lilies and day lilies (*Lilium* and *Hemerocallis* spp.); yesterday, today, and tomorrow; yew
- Bone, blood, and feather meal
- Pest baits and repellents
- Fertilizers
- Compost
- Insecticides